



FOR A MORE ACCESSIBLE  
VERSION OF THIS  
DOCUMENT, CONTACT:  
INFO@TPIGLOBAL.ORG



# TPI Impact Review

---

## REQUEST FOR PROPOSAL

### Application Deadline:

By December 15<sup>th</sup> 2021 (applications will be considered as they arrive)

---

### The Partnering Initiative

21B Park End Street, Oxford, OX1 1HU, United Kingdom and Wales Charity no: 1154259  
UK-registered Company no: 08528402

## Information

### The organisation

The Partnering Initiative is the leading independent not-for-profit dedicated to unleashing the power of partnership for a prosperous and sustainable future. TPI was founded in 2003 around a passionate belief that only through collaboration among business, government, NGOs and the UN can we tackle the greatest environmental, development and resilience challenges and transform societies.

For 18 years, TPI has been internationally recognized as a pioneer in the development of the theory and practice of cross-sectoral partnering. TPI continues to push the boundaries through its cutting-edge work strengthening the enabling system that allows partnerships to thrive:

- encouraging supportive international and national policy;
- building platforms and other mechanisms in-country that can systematically catalyse partnerships;
- supporting international partnerships to operate as strategically and effectively as possible;
- helping major international organisations to undertake the change required to be institutionally effective at collaboration through its ground-breaking Fit for Partnering approach;
- building the skills and capacity of individuals for partnering (including through training, tools and guidebooks and research pieces).

TPI has built up a considerable reputation for ‘delivering above our weight’: both in terms of developing new theory, and codifying effective partnering practice; and in terms of our outreach, connections and engagement with the business sector, the UN and intergovernmental processes.

#### Delivering an ambitious vision

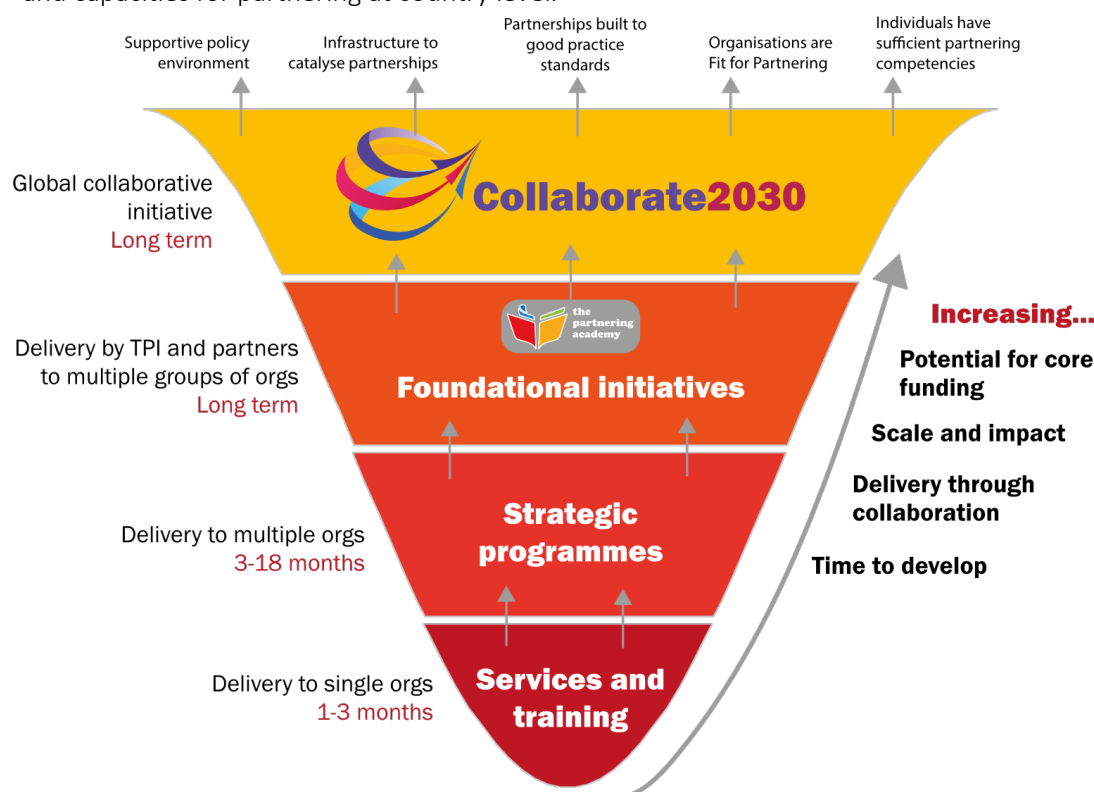
TPI’s ambitious vision is of a society in which collaboration and partnering become the ‘new normal’, in which we systematically collaborate to together make best use of the limited resources we have on this planet (natural, human and financial) in ways that can deliver the greatest value to all and achieve prosperous economy, thriving society and a health environment.

TPI’s theory of change and organising framework (“Collaborate 2030”) is based on the five elements above. To deliver towards the five elements, we work at three levels, with increasing levels of impact, complexity, need for collaboration, and length of time.

- 1) Services and training: Offering one-to-one support and training to partnerships and organisations; TPI also offers open training courses from time to time;
- 2) Strategic programmes: Medium term programmes working collectively with a number of key players around a particular issue and developing the state of the art of partnering in that area (e.g. Foundations and partnering programme);



- 3) Foundational initiatives: Longer term initiatives working with a range of partnering organisations to collectively deliver at scale (e.g. the Partnership Accelerator with the UN to help build platforms and capacities for partnering at country level).



## Context for impact review

TPI is about to embark on a new strategy development process covering the period 2022-2025. In order to inform this new strategy, we are commissioning an impact review process to understand TPI's impact during the previous period.

## The consultancy project

The impact review is a short-term consultancy project **ideally suited for a post-graduate student looking to strengthen their experience in evaluation and review.**

Working closely with the TPI team, the consultant will develop a qualitative / anecdotal (and where possible, quantitative) assessment of TPI's impact over the last 3 years.

### Inputs available for review process

- 2018-2021 Strategy and operational plan
- Annual reports since 2018 (includes summary overview of all projects undertaken, including financial history and staff / associate / board changes)
- Feedback from in-person and online training (already partially undertaken)
- Mini-review of TPI undertaken by Swiss associates (slide deck)
- Relevant project-level data which suggests TPI impact, including any 'after-action reviews' undertaken
- Access to internal knowledge management system (using Microsoft Teams), as needed

Additional inputs to be developed by consultant (supported by TPI core team as needed):

- A short survey of a representative sample of organisations we've worked with over the last 3 years, sent directly plus distributed via social media channels

- A series of semi-structured interviews with internal team (current and past) plus selected associates and close friends, to assess how we performed against the strategic objective: what is their perception of TPI's contribution to partnering?
- Interviews with TPI clients and partners: what was the impact of TPI's support on their organisation's work?
- Review of citations of / references to TPI work by other organisations

#### Expected deliverables

- Written assessment of the degree to which TPI has delivered systemic shifts in partnering for clients and beneficiaries, evidenced by a mix of qualitative and quantitative data.
- This will be an internal document, designed to support for TPI's new strategy development process. We may make it publicly available in some form, with credit to the consultant.

We anticipate the overall level of effort for this project to be in the range of 15-20 days and hope to conclude by end March 2022.

## **Competencies**

---

### Essential

- Native level fluency in written English;
- Masters level (or more than 6 months into a PhD);
- Research experience and analytic skills; and
- Some familiarity with international development

### Desirable

- Experience of impact assessment and evaluation;

## **How to apply**

---

Please send us your CV with a one or two page proposal to [recruitment@tpiglobal.org](mailto:recruitment@tpiglobal.org) by 15<sup>th</sup> December. This should set out how you would approach the project, the timeframe and your expected daily rate.

Applications will be reviewed as they are submitted. There will be a short call with all interested candidates to clarify the project scope. This will be followed by the contract award.

Every role at TPI is open to applications from all sections of society, regardless of; race, religion or belief, ethnic origin, different physical ability, family structure, socio-economics, age, nationality or citizenship, marital, domestic or civil partnership, sexual orientation, gender identity, or any other aspect.

We particularly welcome applications from people from groups that are underrepresented in the UK charity sector.

We very much look forward to receiving your application.